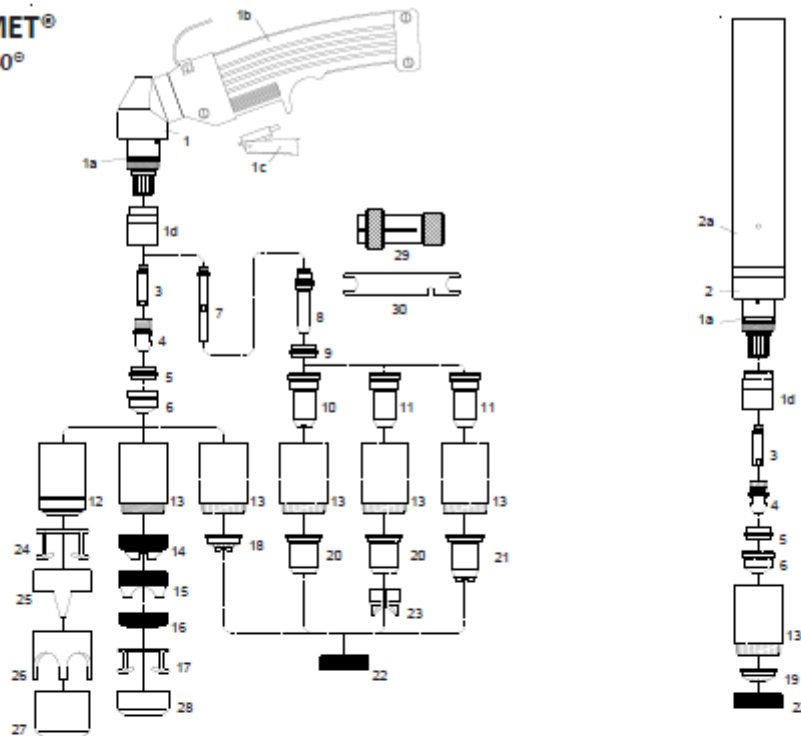


TRAFIMET®
A140-P140®



No.	Ref.	Code	Description	No.	Ref.	Code	Description
PA101		06250	Hand torch 6m M14 x 1	11	PD117-14	51149.14	Extended tip ϕ 1.4
		06251	Hand torch 6m cent. connector			51149.17	Extended tip ϕ 1.7
PA102		06350	Hand torch 12m M14 x 1			51149.19	Extended tip ϕ 1.9
		06351	Hand torch 12m cent. connector	12	PC101/102	60375	Retaining cap, long life
PA103		06450	Machine torch 6m M14 x 1	13	PC103/131	60385	Contact retaining cap
PA145		06451	Machine torch 6m cent. connector		PC103/131	60385/V	Contact retaining cap, Max.life
PA104		06550	Machine torch 12m M14 x 1	14	CV23	51940	Spacer for contact cutting
PA146		06551	Machine torch 12m cent.conn.	15	CV39	51945	Large spacer for contact cutting
1	PF101	06200	Hand torch head	16		51952	Spring holder protection nut
1a	EA131	06000.60	O - Ring	17		51911	Spacer spring for code 51952
1b		07301	Handgrip complete with switch	18		51950	Spacer for contact cutting, hand
1c		07301.20	Switch	19		51951	Shield cup, machine
1d		60080	Front insulator	20	CV8	51957	Shield cup, hand (max. 50A)
2	PF102	06400	Machine torch head	21	CV9	51958	Spacer for contact cutting, hand
2a		03310	Machine handle	22		51959	Locking nut
3		05004	Diffusor	23		51974	Spacer for extended tips High Amp.
4	PR101	52533	Electrode	24	CV11	51910	Spacer spring
5	PE101	60030	Swirl ring	25	CV12	60370	Double pointed spacer
6	PD101-11	51154	Tip ϕ 1.1	26	CV14	60371	Crown spacer
	PD101-14	51155	Tip ϕ 1.4	27	CV13	60373	Gouging spacer
	PD101-17	51156	Tip ϕ 1.7	28		51953	Gouging spacer
	PD101-19	51157	Tip ϕ 1.9	29	GR60	60369	Extractor for swirl ring
	PD101-30	51158	Gouging tip ϕ 3.0	30		60368	Wrench for electrode
7		05005	Extended Diffusor			04220	Cable 6m M14 x 1 - Hand torch
8	PR116	52530	Extended electrode			04230	Cable 12m M14 x 1 - Hand torch
9	PE103	60031	Insulating spacer			04222	Cable 6m M14 x 1 - Machine torch
10	PD111	51149	Extended tip ϕ 1.1 (max. 50A)			04232	Cable 12m M14 x 1 - Machine torch